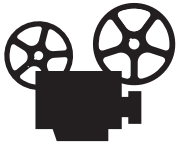


Transparencies

This topic includes:

- "Guidelines" on page 2-32
- "Printing Transparencies from Tray 1 (MPT)" on page 2-33
- "Printing Transparencies from Tray 2" on page 2-34

Transparencies can be printed from Tray 1 (MPT) or Tray 2. Handle transparencies by the edges using both hands to avoid fingerprints and creases which can cause poor print quality.



Videos are available with instructions for loading transparencies. Videos are located on the *User Documentation CD-ROM* and at www.xerox.com/officeprinting/6250support.

Guidelines

- Xerox recommends that you use only Xerox Phaser 25-Series Premium Transparency Film, which has been specifically developed for use with this type of printer fuser.
- Place no more than 50 transparencies at one time in the tray.

To order supplies and accessories, contact your local reseller or visit the Xerox web site at www.xerox.com/officeprinting/6250supplies.

Caution

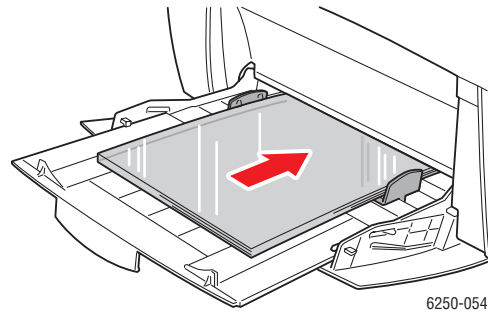
Non-Phaser 25-Series Premium Transparency Film can produce poor image quality, jam the printer, wrap around the fuser rollers, or melt. Some non-Phaser Series-25 Premium Transparency Film have paper tape on the edge that can separate in the heat of the fuser, leading to damage. Damage caused by using non-Phaser 25-Series Premium Transparency Film is not covered under the Xerox warranty, service agreement, or Total Satisfaction Guarantee.

Printing Transparencies from Tray 1 (MPT)

1. Fan the transparencies to release sheets that may stick together.



2. Insert the transparencies into Tray 1 (MPT). For more information, see the “Basic Printing” topic in this section.

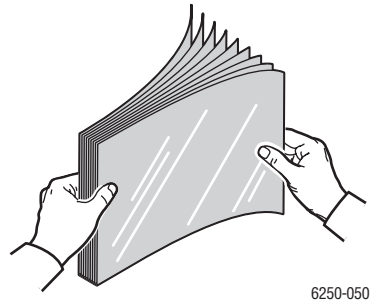


When prompted by the front panel to confirm the paper type and size:

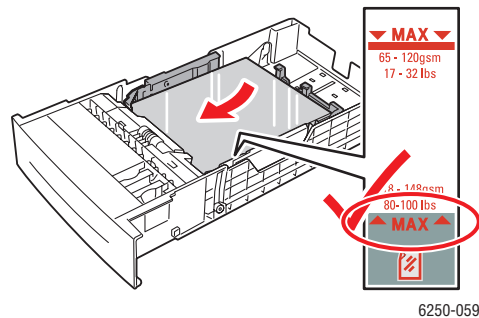
3. If you have not changed the type or size of paper, press the **OK** button to accept the current setting for paper type and size.
4. If you have changed the paper type:
 - a. At the printer's front panel, select **Change**, then press the **OK** button.
 - b. Select the appropriate paper type.
 - c. Press the **OK** button to save your selection.
5. If you have changed the paper size:
 - a. Select the appropriate paper size.
 - b. Press the **OK** button to save your selection.
6. In the printer driver, select either the paper type or **Tray 1 (MPT)** as the paper source.

Printing Transparencies from Tray 2

1. Fan the transparencies to release sheets that are stuck together.



2. Insert the transparencies into the tray.



When prompted by the front panel to confirm the paper type and size:

3. If you have not changed the type or size of paper, press the **OK** button to accept the current setting for paper type and size.
4. If you have changed the paper type:
 - a. At the printer's front panel, select **Change**, then press the **OK** button.
 - b. Select the appropriate paper type.
 - c. Press the **OK** button to save your selection.
5. If you have changed the paper size:
 - a. Select the appropriate paper size.
 - b. Press the **OK** button to save your selection.
6. In the printer driver, select either the paper type or **Tray 2** as the paper source.

Note

Do not load transparencies above the transparency fill line; it may cause the paper to jam.